

Human Factors Research Center

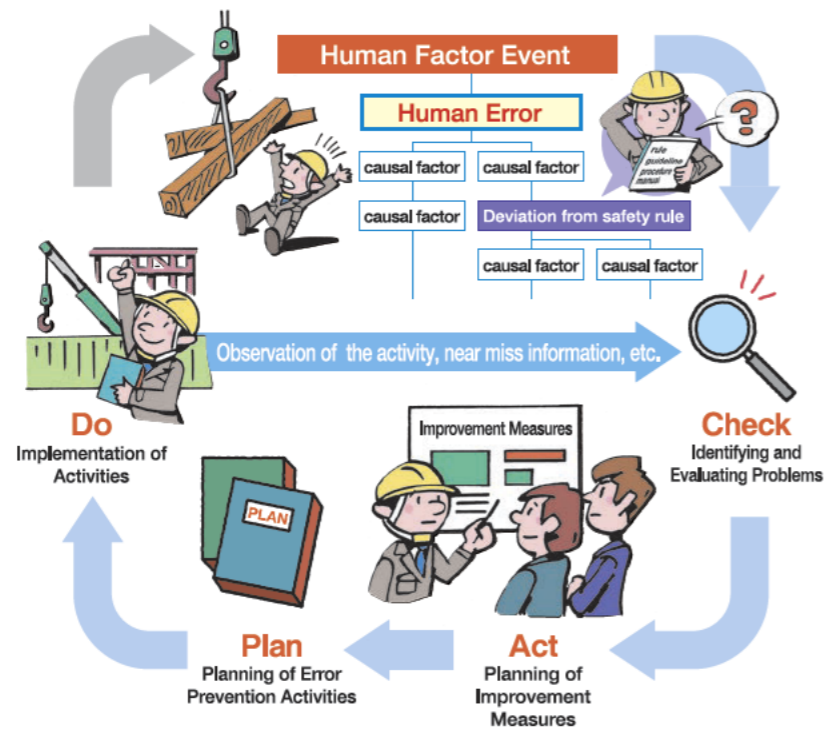


The human factor researches for safe and stable operation of electric power facilities

The Human Factors Research Center (HFC) was established in July, 1987 aimed for research activities to improve the safety and the reliability of the nuclear power generation facilities by human error reduction. Since then, HFC does the wide research activities for the problem solution concerning human factors, and contributes mainly in the electric power facilities for reducing human errors (HE) and fostering safety culture in organizations.

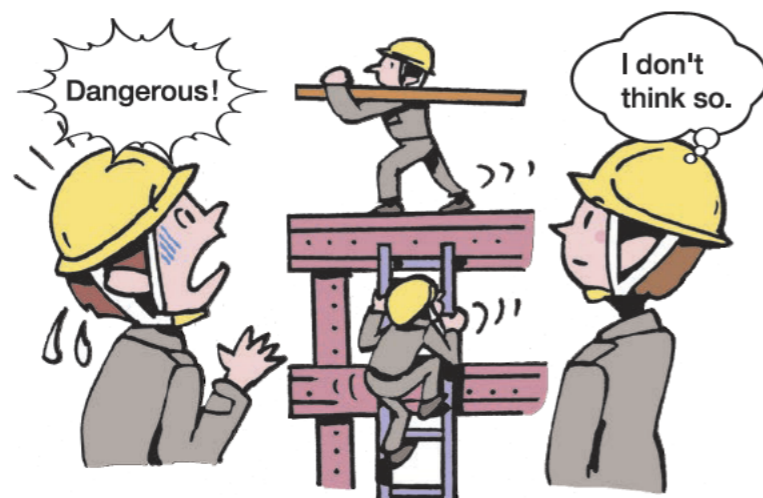
The prevention of the human error and the introduction means of the safety rule

HFC is proposing management process starting from human error event analysis that enables an organization to positively identify human performance problems and to take effective measures. At present, means for introducing safety rules is examined as one of these measures from the viewpoint of the rule user.



The improvement methods of individual risk perception

The ability to anticipate potential risks in a workplace, risk perception, is indispensable for preventing accidents or human errors. Therefore, we are studying about some improvement methods of individual risk perception through developing the measurement method of risk perception and examining determining factors of it.



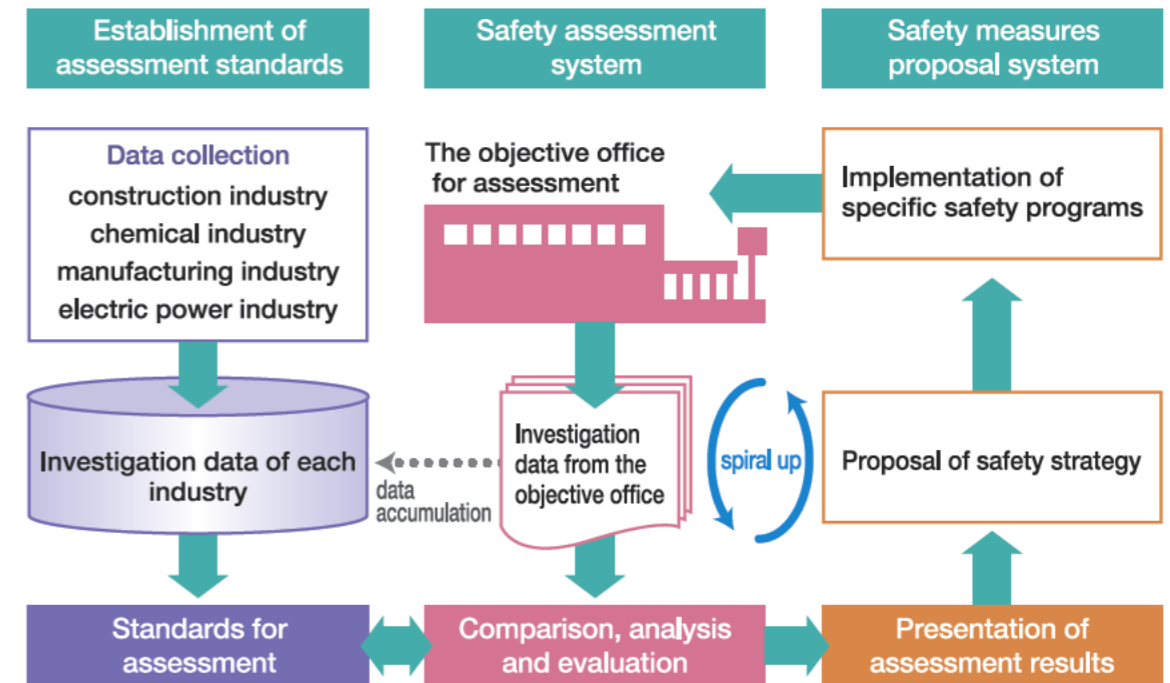
Research for good performance of an organization

Research for good performance of a person

Fostering safety culture in organizations

HFC developed the technique to assess organizational climate and problems on safety management by the questionnaire survey for providing improvement strategy. Using this technique, HFC is supporting to foster safety culture in organizations of various industries. Also, with knowledge of safety culture we are making clear the characteristics of the organizations which can correspond to the unexpected situation such as accidents and disasters.

Support for fostering safety culture in organizations by the safety enhancement system



Teamwork and emergency correspondence

Teamwork is indispensable for the worker to do a cooperation work smoothly. HFC develops the technique to evaluate teamwork quantitatively and is making clear the factor which influences teamwork. Utilizing former knowledge on teamwork, we are studying about the improvement means of the teamwork which crossed a type of job and a division of office which becomes necessary in emergency correspondence.



HFC is holding the seminar for good understanding to human factors and for helping human error prevention. Also, teaching materials for the safety education are developed and provided by HFC.

The teaching materials for the safety education of HFC [Japanese]

- Caution Reports, No.1-No.118
- Caution Reports, The No.100 Special Memorial Issue
- Caution Reports, The Handy Edition
- Analysis of Accidents Caused by Human Error Events
“A Shigaraki Kougen Railway Accident”
- Analysis of Accidents Caused by Human Error Events
“The Wrong Patient Accident”
- Checkpoints for Preventing Recurrence of Errors in Maintenance
- Five Points to Prevent Occupational Accidents
- What Managers Should Do to Promote Safety?
- An Illustrated Booklet for Understanding Human Factor Events
- An Illustrated Booklet for Understanding Occupational Accidents Prevention
- Good Practices in Safe Organizations
- Encouragement of Effective Rest
- Teaching Materials for Fostering Human Factor Culture (DVD, etc.)



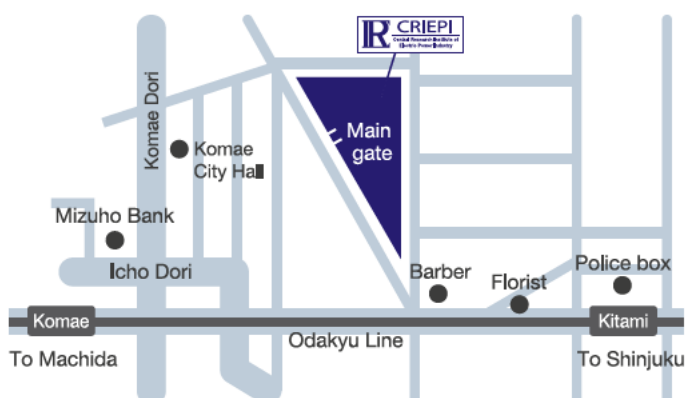
The human factor seminar (annually)



History

1987	Establishment of the Human Factors Research Center (HFC)
2004	Ancillary establishment in the Socio-economic Research Center
2011	Ancillary establishment in the Nuclear Technology Research Laboratory

Access



Approximately a 10 minute walk from Kitami Station on the Odakyu line.

*Approximately 25 minutes from Shinjuku Station to Kitami Station on the Odakyu line.

(Transfer to the local train at Seijogakuen-mae Station. Rapid express trains do not stop at the Seijogakuen-mae Station.)

Inquiry

Nuclear Technology Research Laboratory Human Factors Research Center

2-11-1, Iwado-kita, Komae-shi, Tokyo, 201-8511

TEL +81-3-3480-2111 FAX +81-3-3430-5779

<http://criepi.denken.or.jp/en/hfc>